

# Voyager

Designed by Journey



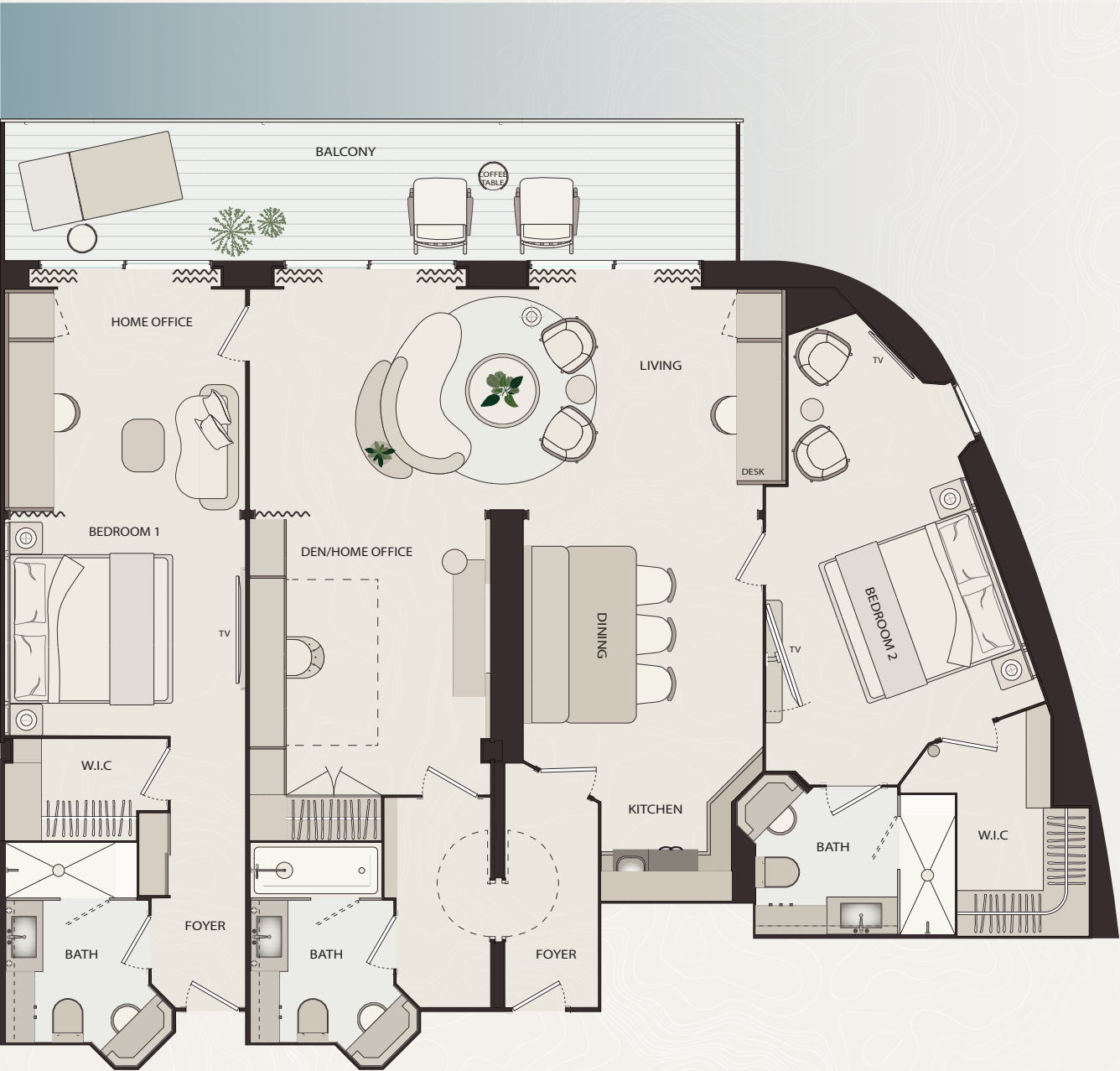
2 BEDROOM + DEN

3 BATHROOM

1,214 - 1,268	INTERIOR SQ FT
175 - 538	BALCONY SQ FT
1,443 - 1,752	TOTAL SQ FT

112 - 117	INTERIOR SQ M
16 - 50	BALCONY SQ M
134 - 162	TOTAL SQ M

DECKS 7 | 8



Stated dimensions are measured to the exterior boundaries of the exterior walls and the centerline of interior demising walls and in fact vary from the dimensions that would be determined by using the description and definition of the "unit" set forth in the purchase agreement including the master covenants incorporated therein by reference (which generally only includes the interior airspace between the perimeter walls and excludes interior structural components). Note that measurements of rooms set forth on this floor plan are generally taken at the greatest points of each given room (as if the room were a perfect rectangle), without regard for any cutouts. Accordingly, the area of the actual room will typically be smaller than the product obtained by multiplying the stated length times width. All dimensions are approximate and may vary after refurbishment, and all floor plans and development plans are subject to change.

SALES CENTER: 159 NE 6<sup>TH</sup> STREET, 8<sup>TH</sup> FLOOR, MIAMI, FL 33132

+1 (866) 765-7327 (SEAS) | +1 (305) 705-7327 (SEAS) | CRESCENTSEAS.COM